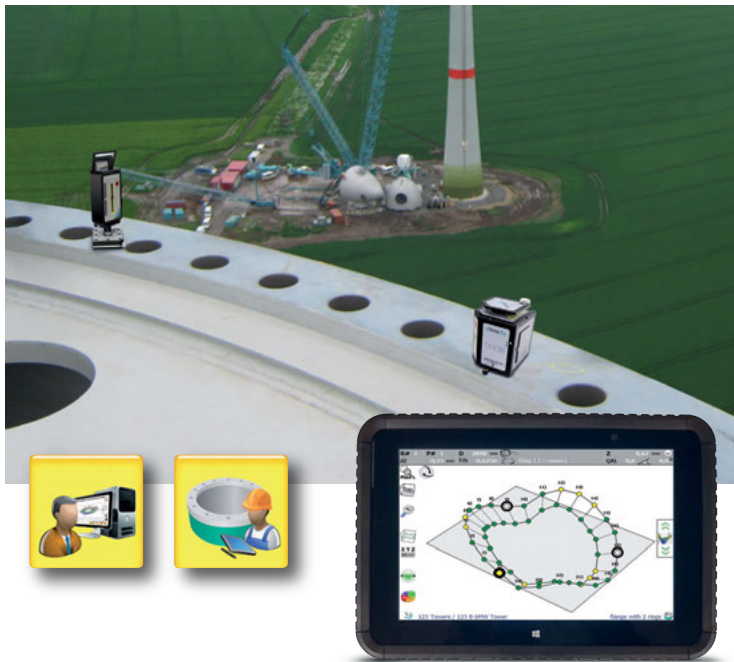


ProFlange[®] v3

Software for Flange Measurement

User Guide



User Guide – English

Software ProFlange®v3

December 2021 – Software version 3.2005.28.1217

We would like to congratulate you on the purchase of your Status Pro Software. Before initial usage you should carefully read the safety instructions as well as the user guidelines contained in this manual. We wish you every success when using this Measurement Instrument.

Please note: User Manuals can be amended when improvements or changes to the product range have been carried out. Use the link below to make sure you have the most up to date version of your User Manual:

www.statuspro.com/userfiles/pdf/Maschinengeometrie/Bedienungsanleitungen/BA_ProFlangeV3_1065_E.pdf

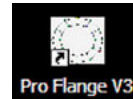
Content

PROFLANGE V3 – QUICKSTART GUIDE	4
1. SYSTEM COMPONENTS	7
1.1 Laser source	7
1.2 Laser Receiver	7
2. SYSTEM SET-UP	8
2.1 Horizontal situation	8
2.2 Vertical assembly / Free assembly	8
2.3 Alignment of the laser plane by infrared	9
2.3.1 Y-Axis	10
2.3.2 X-Axis	11
3. SOFTWARE INSTALLATION AND PREPARATION	12
3.1 Installation using a Windows Installer	12
3.2 Installation without a Windows Installer	13
3.3 Connecting Sensors with the Software	13
3.3.1 Choice of sensor	14
3.3.2 Sensor search	14
3.3.3 License key	14
3.3.4 Connection status	15

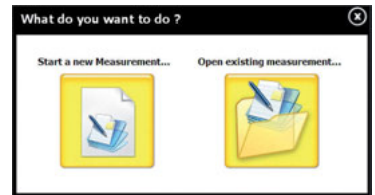
4. PROFLANGE V3 – USAGE	16
4.1 Start dialogue	16
4.1.1 Open existing measurement – opens a previously stored measurement	16
4.1.2 Start a new measurement – Initiate a new measurement	17
4.2 Options bar	19
4.3 3D view	20
4.4 2D view	25
4.5 Taper	26
4.6 Short-Waviness	28
4.7 Data view	31
4.8 Tool bar	32
4.8.1 Open a measurement	32
4.8.2 Storing a measurement	33
4.9 Toolbox	34
4.9.1 User role	35
4.9.2 Advanced Set-up	35
4.9.3 Database administration	38
4.10 Project manager	39
4.10.1 Project properties	39
4.10.2 Flange list	40
4.10.3 Flange properties	41
4.10.4 Flange properties Page 2 (Administrator Mode)	42
4.10.5 Ring list	42
4.10.6 Point list	43
4.10.7 Short waviness classes	43
5. MEASUREMENT	44
6. ANALYSIS	46
6.1 Setting points to zero, manually	46
6.2 Best-Fit Analysis	46
6.2.1 Ring select	47
6.2.2 Best-Fit Mode	47
7. EXPORT AND REPORT	48
7.1.1 Export content	49
7.1.2 Report Header / Corporate symbol	49
7.2 Report	50
8. ACCESSORIES	51
9. DECLARATION OF CONFORMITY	53

ProFlange V3 – Quickstart Guide

1. Turn on the Display Unit and the Bluetooth Sensor.
2. Start the ProFlange software using the desktop icon.

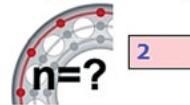


3. Choose whether to start a new measurement (Start a new measurement) or open a previous measurement (Open existing measurement). Our following example will be a "new measurement":



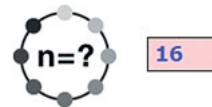
4. Specify amount of rings per flange (Ring count on flange).

Ring count on flange



5. Specify the amount of points per ring (Point count on ring).

Point count on each ring



6. Choose direction of measurement progress, either clockwise (CW) or anti-clockwise (CCW).

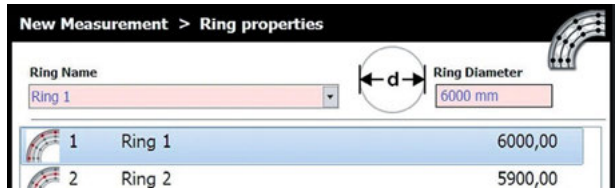
Flange Orientation



7. Move to the next page.



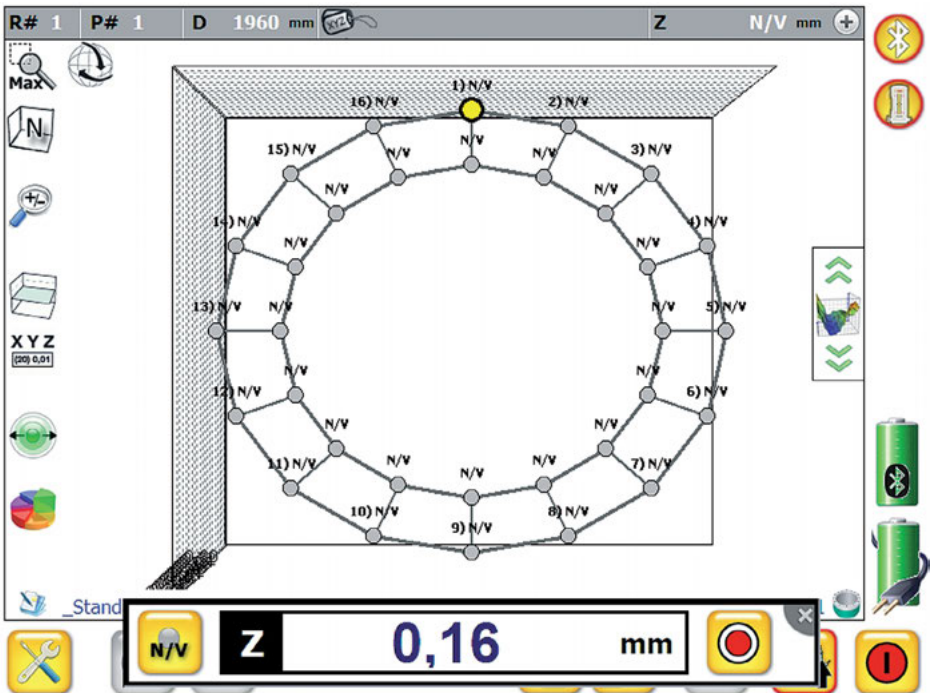
8. Choose the appropriate ring and enter the ring diameters. (Ring diameter)



9. Confirm by pressing the icon.

10. Choose the starting point.

11. Start the measurement procedure for the chosen point by pressing the icon.



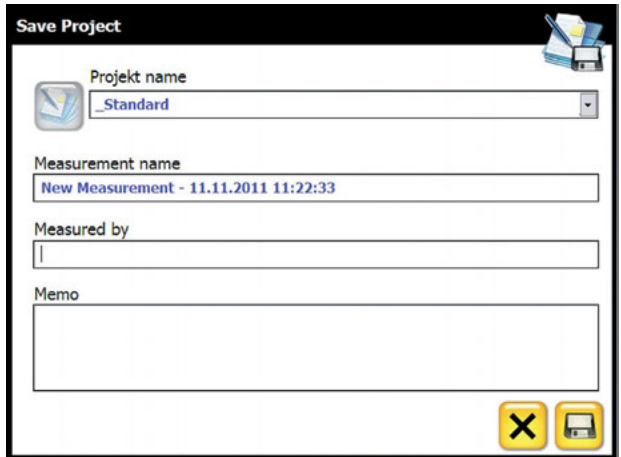
12. The measurement window will appear with the measurement value, as soon as the value is stable, press the measurement icon on the display or on the R260 sensor. The next point to be measured will be displayed automatically. The order of measurement is 1 Outside, 1 Inside, 2 Outside, 2 Inside etc.

13. To save a measurement open the toolbox.



14. Then press the icon displaying a diskette.

15. Enter the measurement name as desired, naming is not compulsory as each measurement has a unique date and time "stamp" ensuring identification.



16. After entering the appropriate details press the diskette symbol.



17. A measurement can be exported as follows:

- a. Press the 3D illustration icon
- b. Press the "csv" button
- c. Confirm your choice by pressing "csv" again
- d. The measurement is saved in C:\Apps\StatusPro\ProFlange V3\export



1. System Components

1.1 Laser source

To carry out a flange measurement we utilise the T405 Sweep Laser from Status Pro:

T405 – Self-aligning Sweep Laser (BG 832550)

The T405 sweep laser is the first high precision laser to be controlled completely by a PC. It is the laser source of the measurement system, the laser receiver R260 measures the position of the laser beam. Even the temperature, sensor data, vibrations etc. can be displayed. It belongs to the second generation of digital lasers from Status Pro. A self-alignment using the sensors is also possible by a simple click in the software. The laser is connected using Bluetooth so operation is as easy as it could be. The laser is equipped with a built-in magnet for a simple and quick measurement setup.



1.2 Laser Receiver

For flange measurement we use a rotational laser receiver:

R260 – Laser Receiver (BG 832600)

The R260 is a robust laser receiver to collect the rotating laser beam. The R260 offers a sensor area of 60 mm to detect the laser plane. The range of up to 50 meters, built-in Bluetooth and removeable battery for a measurement duration of up to 8 hours are convincing features. The button for the remote triggering of the measurement makes the receiver a perfect tool for flange measurement.

We suggest to make yourself familiar in advance with the operation of the Software and the devices used. It will make handling of the system much easier and help to understand the measurement procedure.

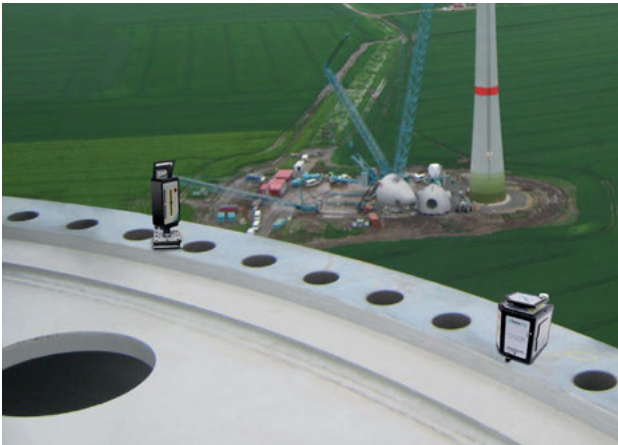
- Laser T405: [BA_T405_100233_EN](#)
- Receiver R260: [BA_R260_100209_EN](#)
- Software Launchpad: [BA_Launchpad_1147_E](#)



2. System Set-up

To measure the flatness of a flange we need a T405 Sweep Laser and a R260 Laser Receiver. The laser plane is first of all aligned more or less parallel to the measurement surface, which can be horizontal, vertical or even sloping. The rotating laser beam provides a virtual plane and the sensor simply measures the distance between the surface and the laser plane.

2.1 Horizontal situation



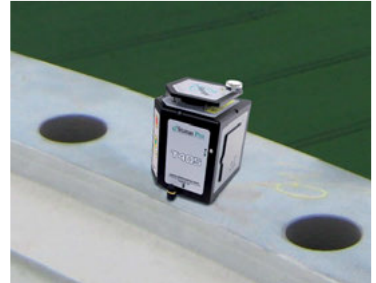
If the flange is positioned horizontally then the setup is achieved by simply placing the laser onto the flange so the Y axis (mark Y/-Y on top of the laser) is facing towards the center of the flange. Afterwards the rotational laser plane has to be aligned roughly parallel to the flange surface. This can be achieved (without using PC and software) by using the infrared

function of the R260 laser receiver or by the help of a PC/Laptop/Tablet with OS MS Windows and installed Lasertool software. Then we use the Bluetooth possibilities of the laser receiver R260 and the laser T405. Alignment by infrared (without PC) is described in chapter 2.3 and aligning the laser plane by using the Lasertool software is described in the document [BA_Launchpad_1147_E](#).

2.2 Vertical assembly / Free assembly

On a vertical flange the T405 can be attached by using the switchable magnet which is mounted at the bottom of the laser, so the Y axis (mark Y/-Y on top of the laser) is facing

towards the center of the flange. Proceed in the same way (Rough alignment of the laser plane) as you do when using the laser horizontally.

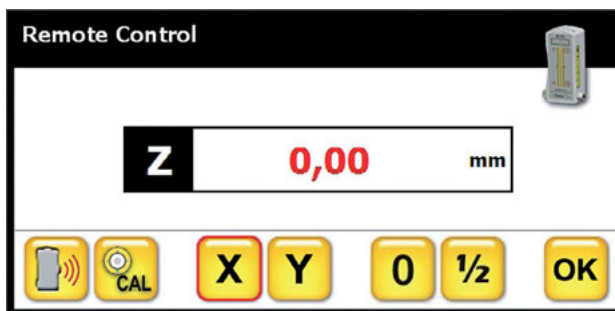


2.3 Alignment of the laser plane by infrared

In this chapter the alignment by using infrared communication is described. Controlling the laser plane can be also done by using the internal possibilities of the R260. You can find detailed information in R260 user guide, chapter 4.4.



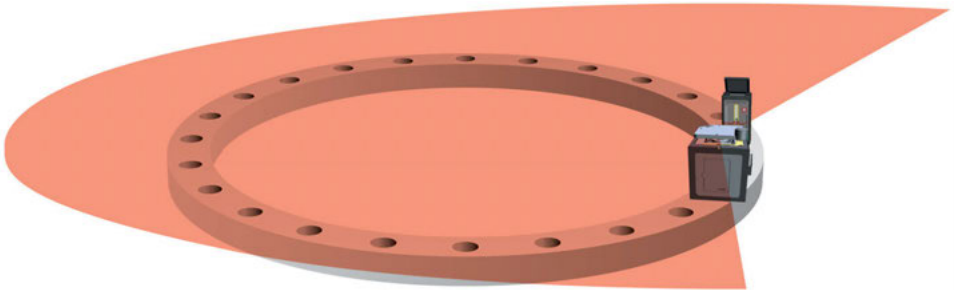
To control the laser plane, start the remote control in ProFlange V3. You will find it in the menu bar.



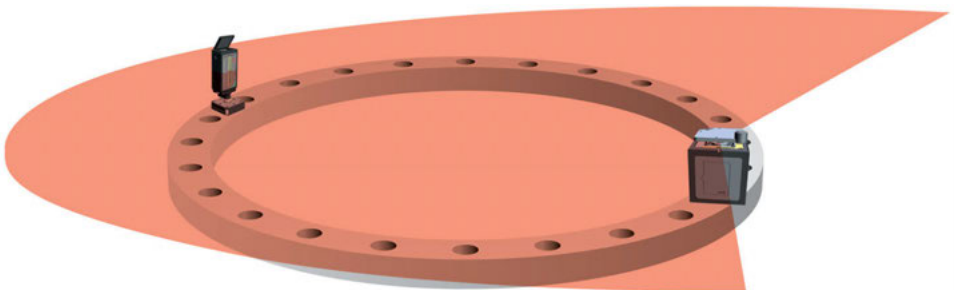
2.3.1 Y-Axis

Place the R260 close and beside T405 onto the flange.


0 Press the 0 button.



Place R260 adverse T405 onto the flange.



Y Activate POS Y of Remote Control.

 Activate Infrared control in the Remote Control.
→ T405 aligns Y-Axis automatically to "0".

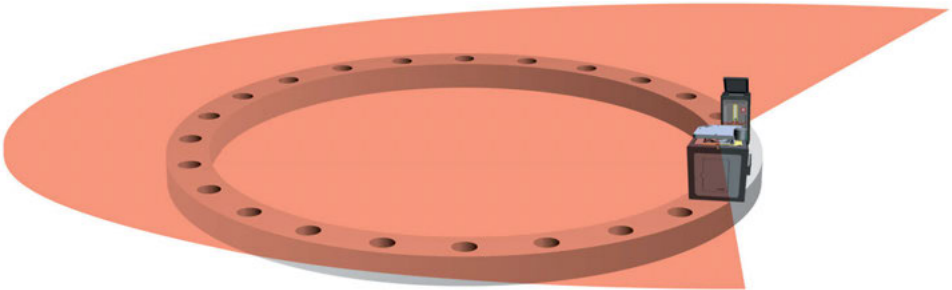
Deactivate Infrared control.

The procedure shall be repeated, depending on how inclined the laser plane had been before.

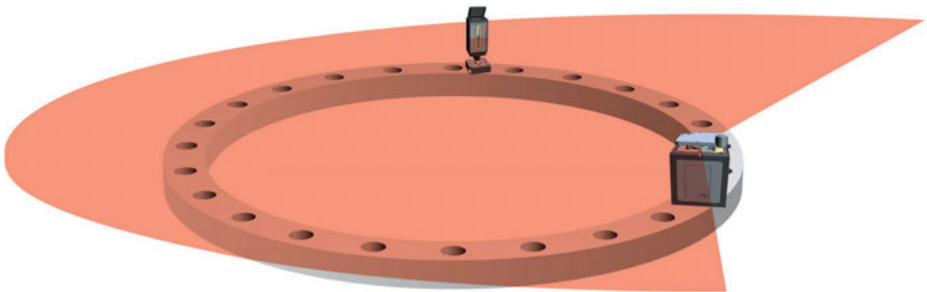
2.3.2 X-Axis

Place R260 close and beside T405 onto the flange.


0 Press the 0 button.



Place R260 at “3 o’clock position” beside T405 onto the flange.



X Activate POS X of Remote Control.

 Activate Infrared control in the Remote Control.
 → T405 aligns X-Axis automatically to “0”.

Deactivate Infrared control.

The procedure shall be repeated, depending on how inclined the laser plane had been before.

3. Software Installation and Preparation

If you have purchased a system complete with tablet PC from Status Pro then all the necessary software installation and preparation will have been completed and tested. You can unpack the system, turn it on and start measuring straight away.

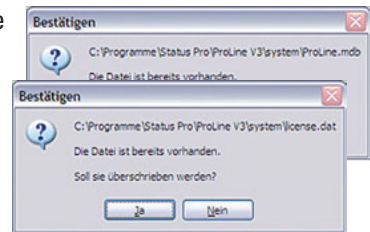
If you have chosen to use your own PC for measuring or if you are updating you existing software then proceed as described below:

3.1 Installation using a Windows Installer

Locate your file "ProFlangeV3_Setup.exe".

Carry out the installation and follow the instructions presented.

If you are updating an earlier software version then take care not to overwrite your previously stored measurements or license key set-ups for your sensors. You will be prompted to choose whether or not you wish to save or overwrite.

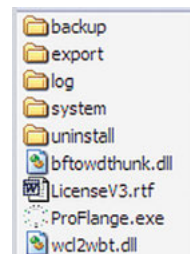


The standard installation path is: C:\Programs\Status Pro\ProFlange V3

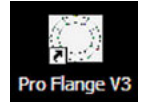
Windows 10 often blocks access to the default file path for third party Software making an Export impossible. If this is the case please designate a different location for storage, for example C:\ Apps\StatusPro, or desired, a different partition.

The ProFlange V3 folder contains several different folders and files:

1. backup → For backing up your measurements
2. export → Exported measurements are stored here
3. log → Log files, useful when troubleshooting, are stored here
4. system → Database set-ups, parameters and license keys are stored here.



A short cut (link) to the ProFlange Software will be placed on your desktop during installation.




3.2 Installation without a Windows Installer


If you have received the software as a complete folder without the installer, then you can freely choose where you store the program folder and place a short-cut on your desktop, Windows 10 often blocks access to the default file path for third party Software making an Export impossible. If this is the case please designate a different location for storage, for example C:\ Apps\StatusPro, or desired, a different partition. It is also possible to run the software without installing, provision is that all the necessary files are complete. It is also possible to copy the complete software folder onto other computers and to run the software locally when evaluating for example.

If you have only received a ProFlange.exe file for upgrading then replace the old one with the new file in the main folder thus keeping all stored information and licenses.

3.3 Connecting Sensors with the Software

If you have purchased a system complete with tablet PC from Status Pro then the sensors will already be registered within the ProFlange software. If you have installed the software on your PC, after starting the software the sensor will not be registered, the sensor symbol is greyed-out .

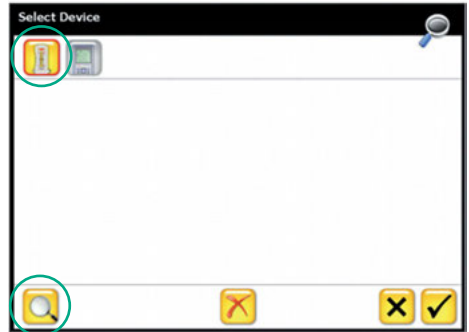
To register a sensor for the first time turn the sensor on and ensure Bluetooth is turned  on. Enter the toolbox by pressing the icon at the bottom left side of the user screen, then confirm by pressing the toolbox icon again.

In the toolbox menu there is a magnifying glass icon at the bottom left corner of the  screen. When pressed the Device Manager is opened:

3.3.1 Choice of sensor

When the “Select Device” screen is opened press the icon at the bottom left hand side of the screen.

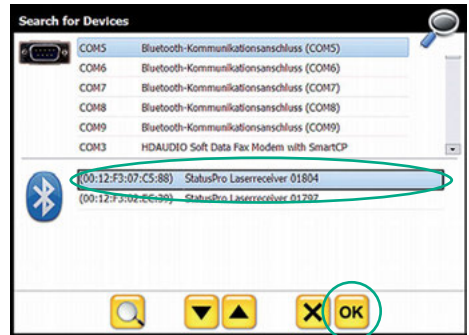
A further window called “Search for Devices” will be opened.




3.3.2 Sensor search

In the “Search for Devices” window, the discovered com ports and Bluetooth devices will be listed.

If several sensors are being showed then choose your sensor and confirm by pressing the OK button in the task bar. The sensor will now be listed in the Select Device list.

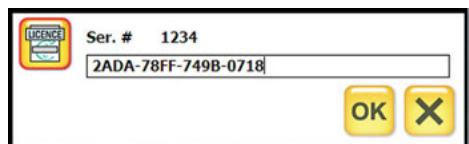


All devices found within the “Search for Devices” will be listed under “Select Devices”. This enables speedy changes between different sensors (i.e. R260 and R360) if necessary.

 Choose the desired sensor from the “Select Devices” list and confirm through acknowledging the “tick” icon.

3.3.3 License key

If a sensor is being registered in the software for the first time then you will be prompted to enter a valid license key. The license key should have been delivered with the software. Enter the 16 digit code (with or without hyphen) and confirm by pressing OK.



If successful a green “tick” will appear, confirm by pressing the tick.

When sensor and software communication have been established then the sensor symbol in the top right hand corner of the measurement screen will be coloured red and yellow.



3.3.4 Connection status



- 1) Bluetooth in the UMPC is turned off, no sensors are connected with the software
 → Check if Bluetooth is switched on or not, re-start the software.
- 2) Bluetooth is turned on but no sensors are connected with the software
 → If you have not yet registered your sensor with the software, proceed from chapter 3.3.
 → Tap the greyed out sensor icon to initiate a short sensor search.
 → If necessary, check the Bluetooth mode on the sensor.
- 3) Bluetooth is turned on and a sensor is available and connected.

4. ProFlange V3 – Usage

When ProFlange V3 is started the sensor is connected automatically. If the connection fails follow the instruction in the chapter 3.3 "Connecting sensors with the Software".

4.1 Start dialogue

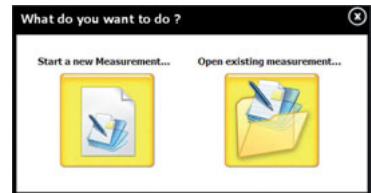
Initially you have the choice between:

Open existing measurement

→ opens a previously stored measurement

Start a new measurement

→ initiates a new measurement / opens a template



4.1.1 Open existing measurement – opens a previously stored measurement

All relevant information for the flange; ring count, point count, diameter etc. can be stored as a template without any measured points. This accelerates a measurement on site as all the parameters are ready for recall when measuring. To do this, proceed as in the next chapter.

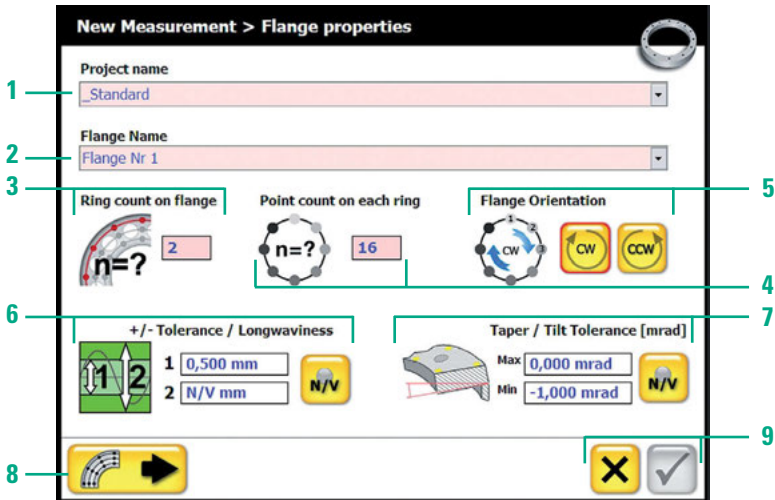
The following pages describe how to make a template for regular use.

Information on how to find and open a template is described under chapter 4.8.1.

4.1.2 Start a new measurement – Initiate a new measurement

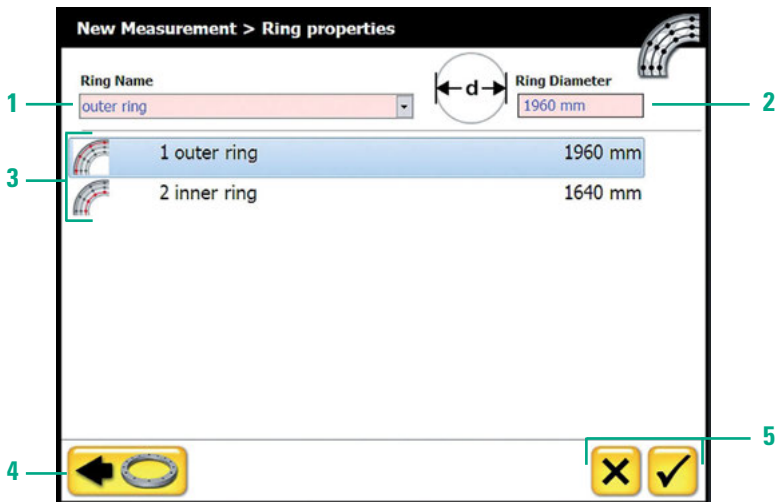
To proceed, a certain amount of details must be entered:

Page 1: New measurement > Flange properties



- 1 **Project name:** Choose a suitable name for the project or leave as the default `_Standard`, all measurements would then be stored under `_Standard`.
- 2 **Flange name:** Allocate the flange to be measured a name for unique identification, it is also possible to leave the default `_Flange Nr 1`.
- 3 **Ring count on flange:** Enter how many rings within a flange are to be measured.
- 4 **Point count on each ring:** Enter how many points are to be measured within the rings.
- 5 **Flange orientation:** Enter either (clockwise) or anti-clockwise (counter clockwise)
- 6 **Tolerance/Longwaviness:** you can enter one tolerance threshold, more than one threshold by entering a value at `_1` and/or `_2`, or no threshold using the `N/V` button.
- 7 **Taper/Tilt Tolerance:** Tolerance threshold for tilt and taper can also be chosen. Negative Tilt is a tilt towards the flange centre.
- 8 **Go to the next page**
- 9 **End entry (X).** In this case the tick cannot be acknowledged as data is missing.

Page 2: New measurement > Ring properties



- 1 Ring name:** Choose a ring from column 3 and give it a name or leave as the default.
- 2 Ring diameter:** Enter the diameter of the chosen ring*.
- 3 Ring list:** Shows a list of rings to be measured counting down in diameter.
- 4 Back to page 1** ("Flange properties").
- 5 Break off entry procedure** (X).
Complete the information entry procedure (Tick).


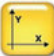







After confirming your entries you will automatically move on to the 3D view where the flange is depicted with the entered attributes. The measurement can be carried out immediately!

* When entering the ring diameters, enter the diameters at the points directly under the sensor and not the physical inside and outside diameters of the flange.

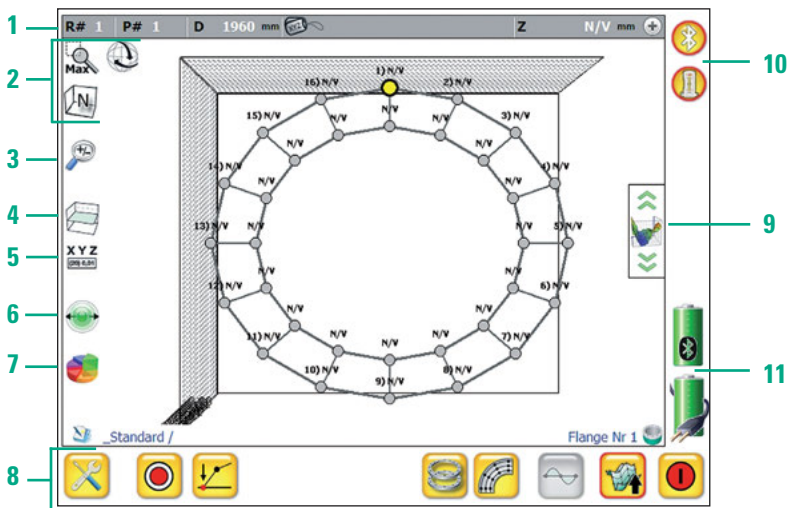
4.2 Options bar

Using the button to the left of the Power Button  a menu bar will be opened:



-  **3D view** – 3D view of the flange. This is the main screen used when carrying out the measurement.
-  **2D view** – 2D view of the flange “opened out” or “developed”. You can analyse single point reliability as well as the relationship of a particular point and its neighbours.
-  **Taper/Tilt view** – When 2 or more rings have been measured then the tilt and taper of the flange can be viewed when this button is pressed.
-  **Short waviness view** – The waviness classes can be viewed here providing they were entered in the Project Manager.
-  **Data view** – Tabelled view of all of the measured points/values.
-  **Export** – Opens the Export Monitor, here you can export all the information relevant to the measurement as a .pdf file or as a .csv file or simply pictograms as a bmp file.
-  **Measurement monitor** – delivers “real time” values from the sensor.
-  **Remote control** – opens the remote control feature to enable control of the R260 sensor.
-  **Cancel** – Closes the menu bar.

4.3 3D view




- 1 Info bar:** Detailed information is shown here: flange number, rings, measurement points, ring diameter and present point value.


R# 1	P# 1	D 2980 mm	name point 1	Z 0,05 mm
------	------	-----------	--------------	-----------

By pressing the  button, additional information can be viewed.

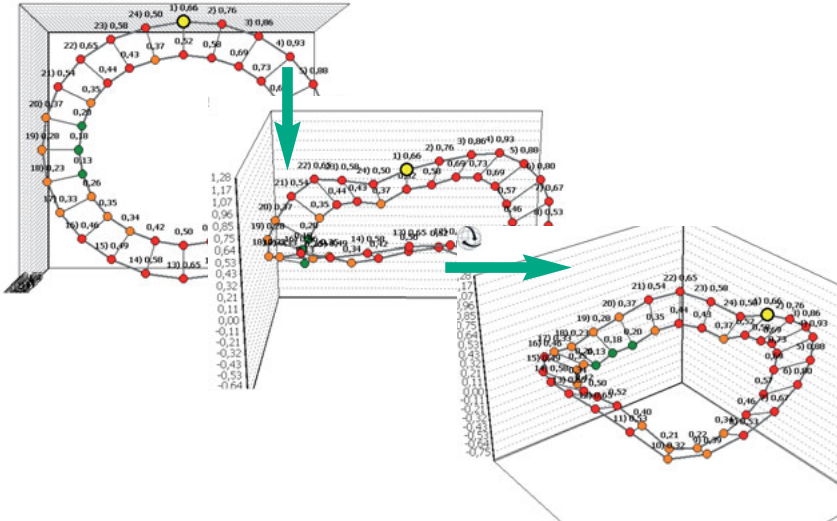
R# 1	P# 1	D 2980 mm	name point 1	Z 0,05 mm
dZ -0,13 mm	Tilt -0,3943	Ring 1 (waviness)	QAL 0,0	0,0°

- 2 View Control:** Using this feature, you can change the view of the flange to meet your preference. Some of the symbols have more than one function, in this case scroll through to use the features.

 *Maximise view:* Use this button to return to the full view of the flange if you have been using the zoom feature.

 *3D mode:* The globe signifies that the 3D view is active. When you move over the screen with your finger the graphic is freely rotatable.

The example below shows the flange in a vertical then in a horizontal plane. Again, choose the view most comfortable for you.



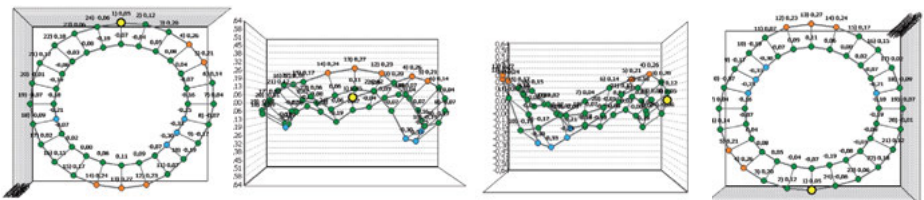
Freeze: By clicking the 3D "globe" display movement is disabled.




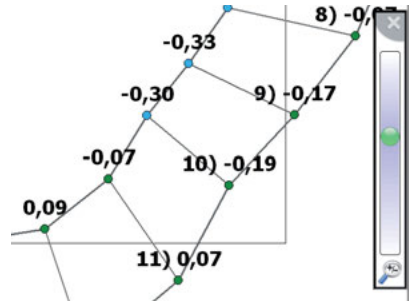
Movement: Clicking the crossed arrows again will enable up and down as well as side to side movement of the display.




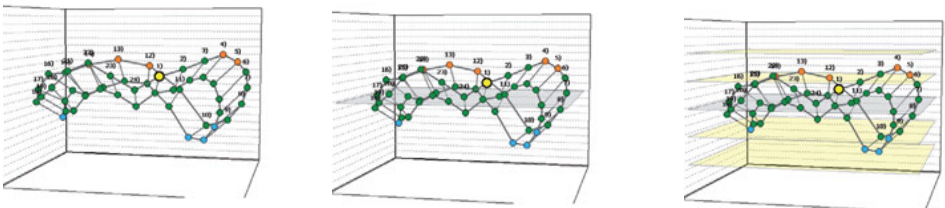
Views: By toggling the grids you can choose between view from below (N), from the side (W), Birds eye view with Point 1 at the top (Top), Birds eye view with Point 1 at the bottom (Top).

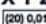


- 3  **Zoom:** Use the magnify feature to zoom in and out as required.



- 4  **Guidelines:** Through toggling the guides, the zero plane, then the max/min planes will be displayed, pressing again will remove all guides.




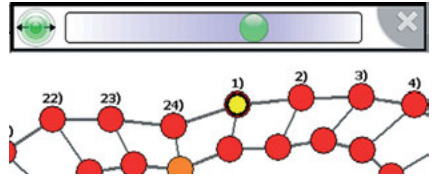
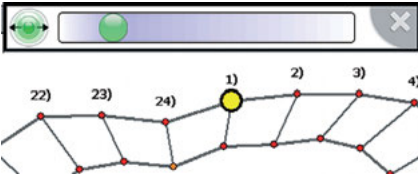
- 5 **XYZ**  **Labelling:** By clicking the XYZ Symbol, the screen for the choice of labels is opened. The measurement points are allocated with the desired information.





The size of the texting can also be adjusted using the green point shift.



- 6  **Point size:** The point size within the display can be adjusted, again by moving the green point and setting the size as required.



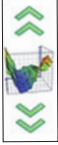




- 7  **Statistics:** When the cake diagram button is pressed, the point analysis table appears (right). The details concerning the accuracy and reliability of each measured point is listed here. The table is freely moveable within the measurement screen.

	
σ	0,00
RMS	0,00
\emptyset	0,00
Σ	0,00
\wedge R-1 #1	0,00
\vee R-1 #1	0,00
\downarrow	0,00

- 8 **Task bar:**

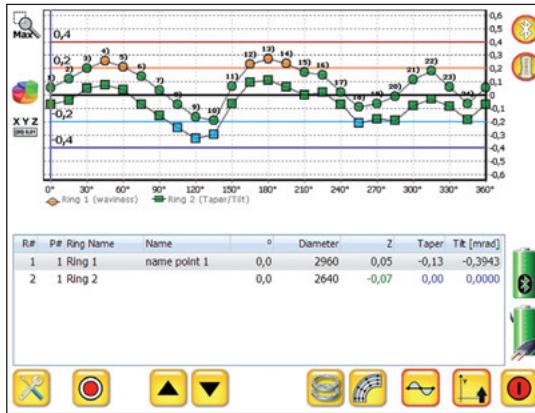


- 1 **Open tool bar** (see 4.8)
- 2 **Trigger measurement** (see 5.)
- 3 **Zero a point** (see 6.1)
- 4 **Choice of flange** (see 4.10.2)
- 5 **Choice of ring** (see 6.2.1)
- 6 **Best-Fit mode** (see 6.2.2)
- 7 **3D view** (see 4.2)
- 8 **Close program**

- 9  **Scaling:** Using this feature you can change the scale of the diagram being displayed, similar to a zoom feature.
- 10  **Connection status:** The upper symbol displays the Bluetooth availability of the Display Unit or PC. The lower symbol displays whether or not the measurement sensor is connected with the software. (see Chapter 3.3.4)
- 
- 11  **Battery status:** The upper symbol shows the charge level of the sensor battery. The lower symbol shows the charge level of the Display Unit or PC battery.
- 

4.4 2D view

In the 2D view the flange is depicted as if it has been “unravalled” or opened out. A sinusoidal line is not unusual here as it is essentially a circle.



Graphics: All measured rings are displayed within the diagram and are displayed using unique symbols. The parameter lines or guides are displayed as coloured lines, measurement points which are outside of these tolerances are clearly visible. The tolerance or guidelines can be blended in or out by toggle-clicking within the graphic window.

Information: By “hovering” the cursor over the measurement points within the diagram, a grey column will appear and a desired point can be chosen by moving to the left or right. The measurement information for the appropriate point is displayed in the lower table of information.

Zoom: To zoom in within the diagram, simply move the cursor to the top left hand corner of the diagram then click and hold the left mouse button, then drag the cursor towards the bottom right hand corner. To zoom out, press and hold the left mouse button, then move from bottom right towards top left within the diagram.



To maximise the diagram simply press the Max icon.



The statistics table will appear when the symbol is pressed (see 3D view).



The XYZ button reveals the labelling options (see 3D view).

4.5 Taper

In the Taper window, the inclination of the flange is expressed as Taper [mm] and Tilt [mrad]. The gradient is calculated and shown for each measured point. The calculation is as follows: Value of the inner ring point – (minus) value of the outer ring point, hence, when the outer ring is lower than the inner ring we have a positive gradient and when the outer ring is higher than the inner ring, we have a negative slope or gradient.



Graphic view: In the graphic view, the gradient of each and every point is shown as a bar chart. Positive gradients show a bar above the zero line and negative gradients are below the zero line. If the value of the point is within the desired tolerances the bar is coloured green, values outside the tolerances are either red or blue in colour.

The graphic always shows rings that are directly neighboured or next to each other, if there are more than two rings, then the outside two rings are firstly illustrated, afterwards the next ring in the inward direction and so on. The change between rings is achieved by scrolling down within the Point table.

Analysis table: In the middle table the statistical values of the measurement or flange as a whole are shown.

Result table: Choose a point by clicking on a bar within the diagram. The vertical grey bar indicates the present position. All relevant information concerning the present point is shown in the Points Table.

When scrolling down in the Points Table, the next rings in the inward direction are shown successively. The last inner ring has no data concerning tilt or taper.

Zoom: Zoom in within the diagram, simply move the cursor to the top left hand corner of the diagram then click and hold the left mouse button, then drag the cursor towards the bottom right hand corner. To zoom out, press and hold the left mouse button, then move from bottom right towards top left within the diagram



To return to the full view simply press the Max icon.



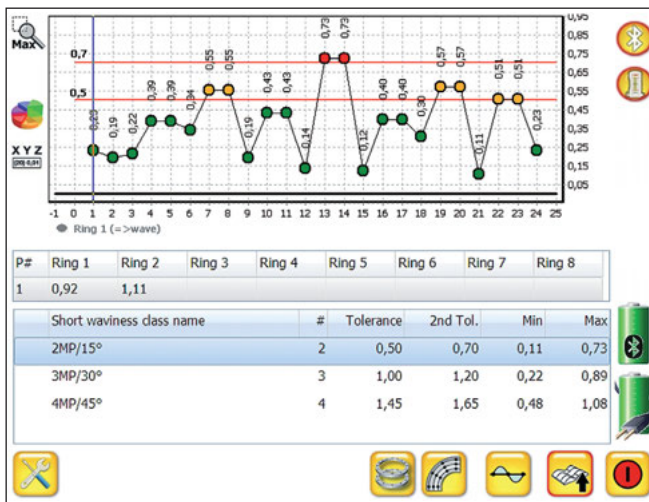
The statistics table will appear when this symbol is pressed (see 3D view).



The XYZ button reveals the labelling options (see 3D view).

4.6 Short-Waviness

The short waviness is a very useful tool for judging point to point detail and not only the general waviness of the complete flange. To emphasize the significance of short-waviness, a flange can have a general waviness of 1 mm, but if this millimetre is the difference between two or three neighboured point then there is probably a kerb in the flange.



The Short-waviness class can be chosen from the menu. Please read chapter 4.10.

Graphic chart: The short waviness for each point is shown in the diagram. The tolerances are shown as coloured lines, in this case red. If the values are not within tolerances the measured point will be shown in a colour other than green as entered in the menu.

Point results: In the middle table, the results can be viewed for the current point highlighted by the grey bar within the graphic chart.

Short waviness results: The short waviness of the flange can be viewed here, also dependant on which class or classes were chosen or desired. The statistical values are shown.

Zoom: To zoom in within the diagram, simply move the cursor to the top left hand corner of the diagram then click and hold the left mouse button, then drag the cursor towards the bottom right hand corner. To zoom out, press and hold the left mouse button, then move from bottom right towards top left within the diagram.



To return to the full view simply press the Max icon.



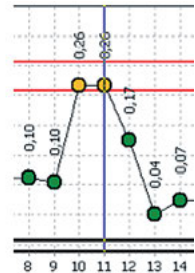
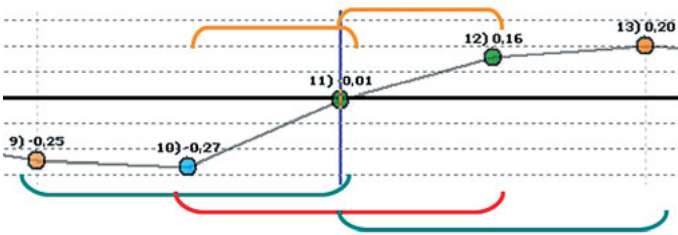
The statistics table will appear when this symbol is pressed (see 3D view).



The XYZ button reveals the labelling options (see 3D view).

Calculation: The short waviness class for 2 points, for example, observes each and every point within the flange, in direct relation to the points directly neighbouring, one to the left and one to the right. A short waviness class for 3 points, for example, observes two points to the left and two points to the right of each and every point on the flange.

Example of class 2 short-waviness (SW): The following diagram illustrates a measurement judged to Class 2 (Left, 2D view, right, short waviness view). Point 10 is viewed in relation to points 9&11, Point 11 is viewed in relation to 10&12, Point 12 is viewed in relation to 11&13.



This shows for Point 11 (red area) two "short-wavinesses" (orange area):

Point 10 (-0,27) with Point 11 (-0,01) = 0,26 mm

Point 11 (-0,01) with Point 12 (+0,16) = 0,17 mm

The largest value shown is 0,26 and therefore the SW (Class2) value for Point 11.

Example of class 3 short waviness (SW): For the same measurement we will now “apply” SW Class 3: Point 11 is compared to Point 9, Point 10, Point 12 und Point 13.



This shows for Point 11 (red area) three “short-wavinesses” (orange area):

Point 9 (-0,25), 10 (-0,27) and 11 (-0,01) = 0,26 mm

Point 10 (-0,27), 11 (-0,01) and 12 (+0,16) = 0,43 mm

Point 11 (-0,01), 12 (+0,16) and 13 (0,20) = 0,21 mm

The largest value shown is 0,43 mm and therefore the SW (Class3) value for Point 11.

4.7 Data view

The data view contains all the relevant data for the measurement and for analysis.

Name		flange with 2 rings		Date		2011-12-13		Time		15:07:47	
R#	P#	Z	deltaZ/Taper	Tilt (mRad)	Name	Diameter	Ringname				
1	1	0,05	-0,13	-0,394328	name point 1	0,00	2960 Ring 1				
1	2	0,12	-0,16	-0,512950		15,00	2960 Ring 1				
1	3	0,20	-0,15	-0,473901	name point 3	30,00	2960 Ring 1				
1	4	0,26	-0,18	-0,563761	name point 4	45,00	2960 Ring 1				
1	5	0,21	-0,17	-0,532793		60,00	2960 Ring 1				
1	6	0,14	-0,21	-0,662231		75,00	2960 Ring 1				
1	7	0,04	-0,19	-0,608019		90,00	2960 Ring 1				
1	8	-0,07	-0,18	-0,557095		105,00	2960 Ring 1				
1	9	-0,17	-0,16	-0,508668		120,00	2960 Ring 1				
1	10	-0,19	-0,11	-0,336781		135,00	2960 Ring 1				
1	11	0,07	-0,13	-0,415368		150,00	2960 Ring 1				
1	12	0,23	-0,14	-0,430834		165,00	2960 Ring 1				
1	13	0,27	-0,16	-0,507125		180,00	2960 Ring 1				
1	14	0,24	-0,18	-0,549550		195,00	2960 Ring 1				
1	15	0,17	-0,17	-0,526099		210,00	2960 Ring 1				

Unit	mm	Taper	-0,28 Max	0,27	0,00	0,01
			-0,66 Min	-0,33	0,15	
			0,38 Abs	0,60		
						RMS

Point results: The results are sorted for Ring and Point respectively. Through clicking a column header, the data can be sorted as wished, for example, sorting using the "Z" values.


The table delivers the following information for each measured point: Z or measurement value, Taper, Tilt, Point Name, Angular position, Ring Diameter, Ring name, Measurement reliability or quality, Date and time, Sensor temperature and Data Origin.

You can scroll through the measurement data either using the arrow buttons or by using the touch screen with stylus or your fingers.

Analysis table: In the lowest table you will find the statistics for the measurement as a whole:

- Chosen Units and tolerances
- Taper Max, Min, Absolute
- Highest and lowest point (Peak to Peak)
- Average and Standard Deviation
- Median and RMS (Root mean square)


4.8 Tool bar



Using the tool symbol at the bottom left hand corner of the main screen you open the tool bar containing the following options:

- 1 **Project manager:** Settings for the Project and Information concerning the Rings, Flanges, Points, Tolerances as well as Analysis can be found here. (see 4.10)
- 2 **Empty page:** Starts a new measurement. (see 4.1.2)
- 3 **Open folder:** Opens a stored measurement or template (see 4.8.1)
- 4 **Save:** Saves the current measurement, (opens save to disc dialogue).
- 5 **Toolbox:** Opens the toolbox for adjusting parameters etc.
- 6 **Tool bar:** Closes the tool bar.

4.8.1 Open a measurement

 By pressing this icon you will open the (stored) Measurements screen enabling viewing or indeed deleting of stored projects and measurements as follows:

1 **Closed files/projects:** In block 1 there are three closed projects, which can be opened by simply pressing on the appropriate project. Click again to close.

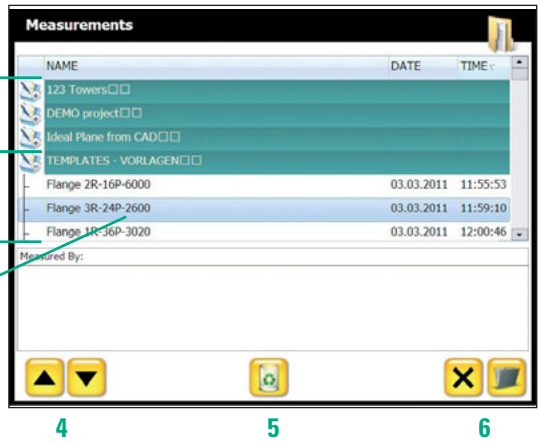
2 **Project file opened:** The opened file shows the templates/measurements contained.

3 **Measurement choice:** Click the appropriate file to be opened.

4 **Scrolling:** Use the arrow buttons/icons to scroll through the screen entries.

5 **Waste bin:** The chosen file will be deleted.

6 **Cancel / Open:** Cancels or closes the dialogue (X) or opens the chosen measurement.

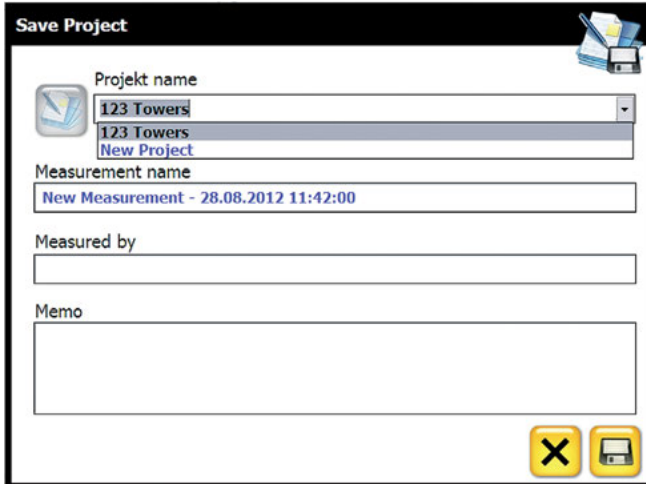


NAME	DATE	TIME
123 Towers		
DEMO project		
Ideal Plane from CAD		
TEMPLATES - VORLAGEN		
Flange 2R-16P-6000	03.03.2011	11:55:53
Flange 3R-24P-2600	03.03.2011	11:59:10
Flange 1R-36P-3020	03.03.2011	12:00:46

4.8.2 Storing a measurement



Using the diskette symbol you can save a measurement or template. By pressing the icon, the Save Project screen will be opened:



Project name: The last saved project name will be suggested or you can choose a new Project file name.

Measurement name: The name of the current measurement can be entered here.

Measured by: The name of the person who carried out the task can be entered here.

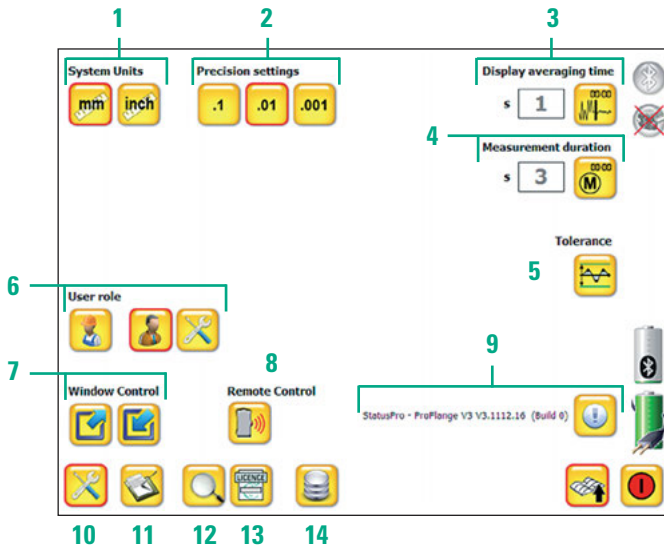
Memo: Any comments related to the measurement process before or during the measurement can be entered here.



The storing of the measurement will be carried out when the diskette symbol is pressed.

4.9 Toolbox

In the Toolbox you can carry out adjustments concerning the measurement as follows:



- 1 System Unit:** Choose the units of measurement.
- 2 Precision settings:** Choose the displayed measurement precision/resolution.
- 3 Display averaging time:** Choose the screen averaging time.
- 4 Measurement duration:** Choose the duration of the a triggered measurement.
- 5 Tolerances:** Direct link to the tolerances input in the project manager.
- 6 User Role:** Choose normal or expert mode and advanced set-up (→ 4.9.1)
- 7 Window Control:** Maximize or minimize the measurement screen size.
- 8 Remote Control:** Opens the remote control window for the R260. (→ 2.3)
- 9 SW Version information:** Shows informations about the Software.
- 10 Toolbox:** Return to the previous screen.
- 11 Log file:** View the log file (Connection Protocol).
- 12 Seek:** Search for new receivers. (→ 3.3)
- 13 License:** Enter the license key for a newly connected receiver. (→ 3.3.3)
- 14 Database:** Choose a different database (→ 4.9.3)

4.9.1 User role

User role



On-Site Mode:

This mode is set as a default. Only functions necessary for the measurement are visible, enabling ease of use. Advanced set-up adjustments are not available. The range of available functions can be defined by the Administrator.

User role



Administrator Mode:

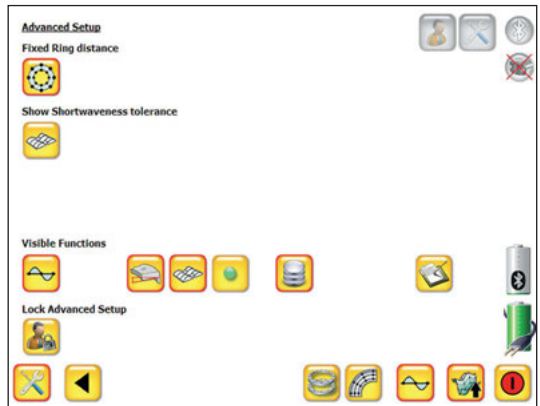
In the administrator mode all functions are freely available and visible. Advanced set-up capability as well as the setting-up of the *On-Site Mode* is possible.

4.9.2 Advanced Set-up

Specialised setting up is possible here:



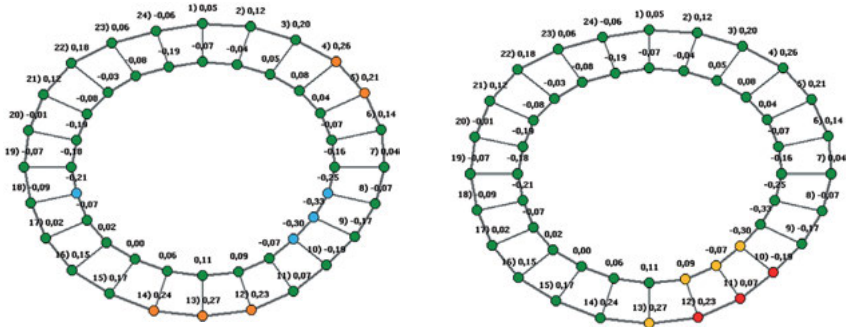
Fixed Ring distance: This is the standard mode. If deactivated, the 3D display will be shown with "real-time" scaling, which means the rings within the measurement could be displayed on top of each other in case of large flange diameters. Use only if needed.



Show short waviness tolerance: If this option has been chosen, the points within a measurement will be analysed with respect to short-waviness to each other.

Measured points outside of the pre-determined tolerances will be displayed (coloured) as determined:

Examples of long-waviness (left) and short-waviness (right) on the same flange:



Visible Functions



Here you can activate or de-activate the functions to be visible in the *Onsite Mode*. Choose carefully to avoid confusing the person measuring, or indeed to control aspects of the measurement.

The graphic below shows a complete menu bar with all functions available:



If the short-waviness evaluation is not activated, the graphic below will be visible.



If the tilt/taper function is deactivated then the graphic below will be visible in the *User Mode*.



The functions deactivated in the *Administrator Mode* will not be available in the Project Manager within the *User Mode*.

Security for example:



If the **Point Button** has been deactivated, then only the Administrator has a complete overview of *all* points measured within the Project Manager. In this view, extensive information concerning every measured point is available, e.g. Date and time, the receiver used. If for example a point was measured twice, this would be visible, as the time would be different.



The **Log Button** will open the log file showing the sensor connection protocol with the software. This function is normally only useful when connection problems arise, enabling the Administrator to assess the problem and if necessary communicate with Status Pro personnel to find a solution for the problem. If desired this function can be deactivated.

Lock Advanced Setup



In the future the *Advanced set-up* function can be safe-guarded using a pass key (in Version V3.1112.16.0 not yet available)

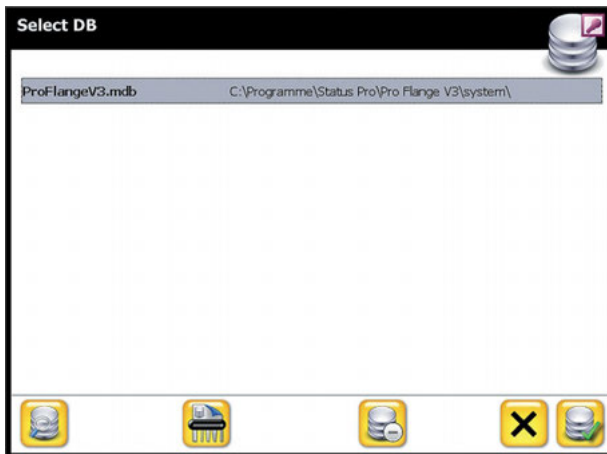


Return to the normal Toolbox view using the **Back Button**.

4.9.3 Database administration



By pressing the database icon the screen for the database choice is opened. Different databases can be chosen in as far as they have been previously created, or alternatively, the file in the ProFlange folder "ProFlange V3_empty.mdb" can be copied and re-named.



The Select Database window is opened allowing the following options:



Choose an existing database by highlighting the database name and then confirming your choice by pressing the Icon (bottom right) with the green tick.



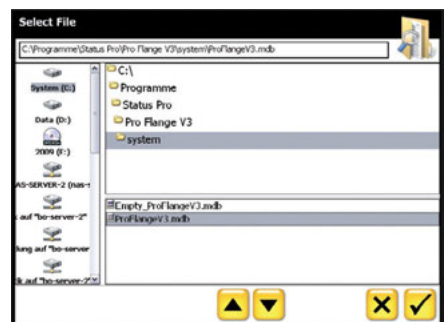
Choose a different database from your hard drive as required by pressing the icon with the magnifying glass, which in turn opens the search directory in the explorer.



Deletes the highlighted database.



Removes the highlighted database from the list without deleting.



4.10 Project manager

When the Project Manager has been opened, the Project properties screen will be visible. At the bottom left hand side of the screen there are now two buttons enabling a structured navigation through the settings procedure. In addition, at the top right hand corner there are symbols with red bordering indicating you present “location” within the manager.

4.10.1 Project properties

The appropriate information for the measurement can be entered here:

- Project Name
- Date, Time
- Location
- Contractor
- Who is measuring


In the *Administrator Mode* the following additional information can also be entered:




By pressing this icon, you will be guided to the flange list.

4.10.2 Flange list

Here you will find the flanges previously stored. Any number of flanges can be stored within a project.

 You can add or delete flanges to the list by pressing this icon. Choose the flange you wish to proceed with by pressing on the name and highlighting it.

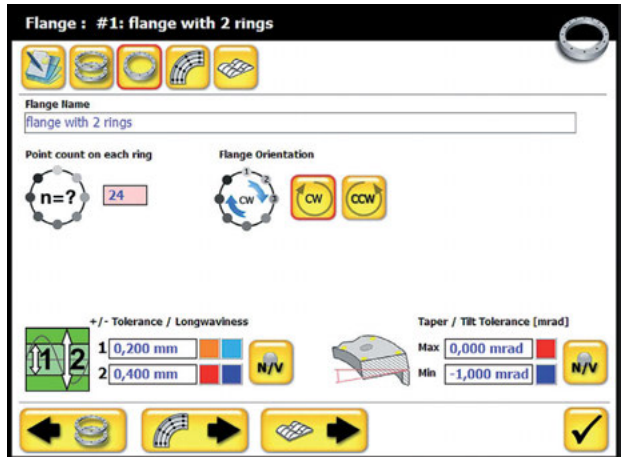


 By pressing this icon you will be guided to the flange properties screen.

4.10.3 Flange properties

Here you can view and/or edit all information concerning the flange measurement:

- Flange Name
- Points per Ring
- Direction of measurement
- Long-waviness tolerances (\pm)
- Taper/Tilt Tolerances



The colour for each tolerance condition can be freely chosen by clicking the colour box next to the appropriate tolerance. A colour dialogue opens, and then by adjusting the RGB slide controllers the desired colour can be chosen.



In the Administrator mode, the flange extreme diameters can also be entered, but only for documentation purposes

Flange Diameter (outer / inner)



By pressing this icon you will be guided to the "Ring list".



By pressing this icon you will be guided to the "Short waviness classes".

4.10.4 Flange properties Page 2 (Administrator Mode)



In the Administrator mode, pressing this button will take you to a second Flange properties page where you add more details (see right).



By pressing this icon you will be guided to the "Ring list".

Flange : #1: flange with 2 rings > Page 2

4.10.5 Ring list

The Ring list shows details of the rings that have been already entered.

Each ring can be chosen separately and its properties viewed and if need be, edited. The rings are sorted with the greatest diameter to the top.



You can add or delete flanges to the list by pressing this icon.



By pressing this icon, you will be guided to the "Point list".

Flange : #1: flange with 2 rings > Ring list

Ring ID	Ring Name	Diameter
1	Ring 1 (waviness)	2960,00
2	Ring 2 (Taper/Tilt)	2640,00

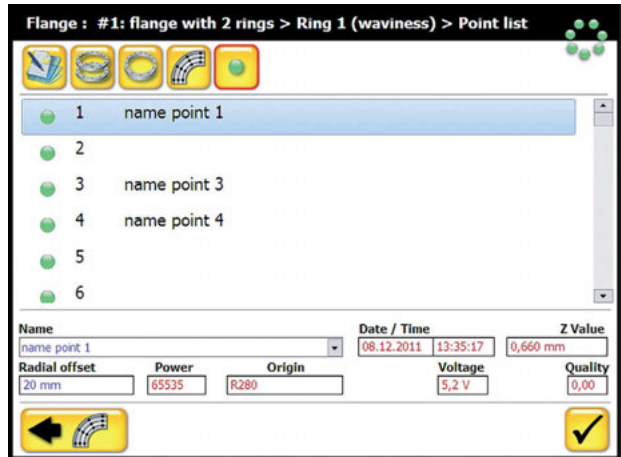
Ring Name: Ring 1 (waviness)

Ring Diameter: 2960 mm

4.10.6 Point list

All relevant details regarding each measured point can be viewed here.

You can name the points as desired and see when the point was measured and with which sensor.



4.10.7 Short waviness classes



The choice of short-waviness class can be chosen from the flange properties page by pressing this icon.

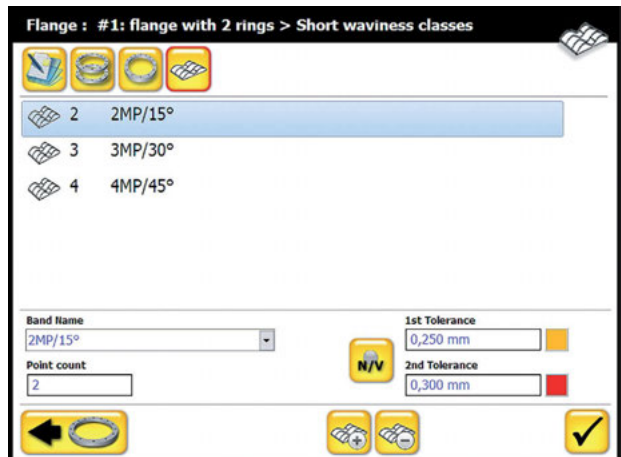
You can view or change the class of waviness here.



Using these icons you can add or remove short-waviness classes.

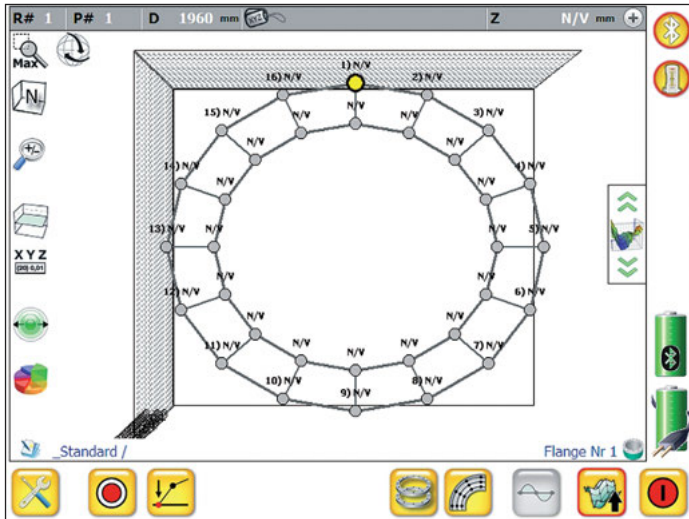
When a waviness class is added, the next higher class is automatically chosen.






You can change the tolerances for the classes at will and allocate colours as desired (see *flange properties*).



5. Measurement

When you start a new measurement or open an existing one, the start screen is always a 3D view of the measurement or template.



-  When this icon is visible, you can “turn” the flange to the desired perspective.
-  This icon indicates a fixed (frozen) view and is obtained by pressing the  icon.
-  Choose the “start” point.
-  Start the measurement procedure.

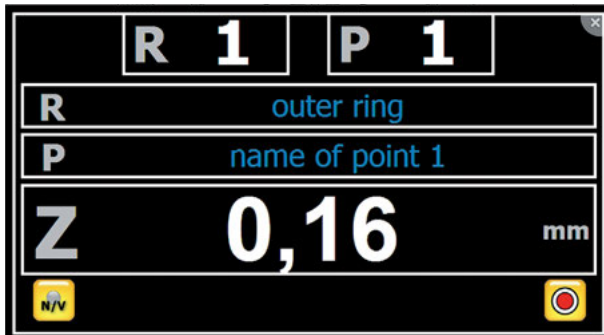


After initiating the measurement procedure, the measurement monitor with value appears, as soon as the value is stable, press the measurement button within the monitor, or press the measurement button on the R260 to trigger and record a measurement. After the measurement has been recorded, the next point to be measured will be selected automatically.

The measurement order is; 1 outer – 1 inner, 2 outer – 2 inner – 3 outer, etc. ...
 When there are more than two rings the order is always from the outer to the next inner point and then to the next outer point.

An existing point can be deleted by pressing the N/V button within the monitor.

The measurement screen can be maximized by carrying out a “double-click” on the measurement value within the monitor. This can be useful when measuring alone, as the UMPC can be left alone and you only need to carry the sensor with you; the values are visible from a distance, and the measurement is triggered using the R260.



In the maximized monitor, the following information is at hand:

- Ring Number
- Point Number
- Ring name, if applicable
- Point name, if applicable
- Current measurement value (Z value)

“Double-clicking” the measurement value again minimizes the monitor.

After completing a measurement, it is advisable to store the data quickly (see chapter 4.8.2).

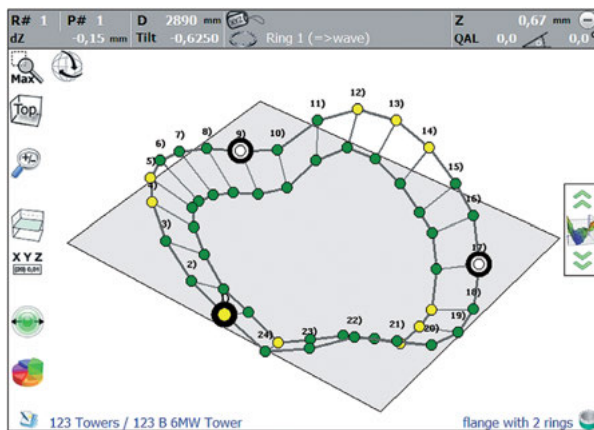
6. Analysis

There are different “tools” for choice when analysing the data, usually only one criterion or method is chosen.

6.1 Setting points to zero, manually



In some cases it may be defined, which points are to be zeroed. In this case, using the Zero button, you can freely choose which point or points are to be set to zero. If only one point is chosen, then the whole scatter plot is raised or lowered accordingly. When three points are chosen the plane will be defined over the three zeroed points.



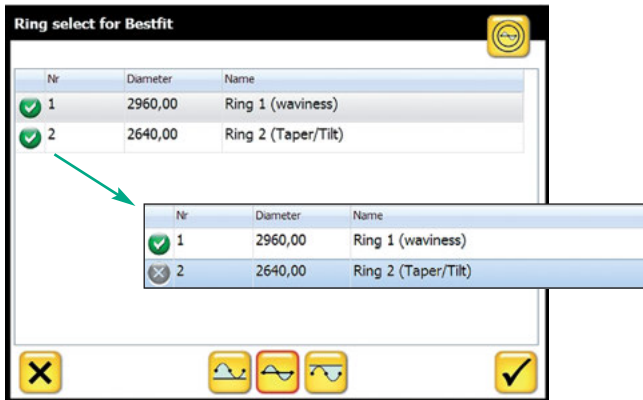
6.2 Best-Fit Analysis



By pressing the icon you can access the Best-fit settings. When a best fit mode is chosen the measured points are analyzed, an ideal plane is laid through all the points so that the distance between each and every point, with respect to the plane, is minimized. This is, as it were the zero-plane through all points.

6.2.1 Ring select

In the main view the rings at hand are listed. By clicking on the rings you can choose which and how many of the rings are to be included for the Best-Fit analysis. In this example, Ring 1 was chosen and Ring 2 was deactivated.



In such cases, when a tilted ring or a taper is required (one ring lower or higher than the other) it does not make sense to include both rings in the calculation, as the Best-Fit analysis or plane would be placed through both rings. This would “cancel-out” taper and tilt.

6.2.2 Best-Fit Mode



This is the default and the most commonly used mode. With this mode the plane is placed through *all* measured points and is very useful for the analysis of pure waviness.



The 3-lowest-points Mode calculates the plane using the three lowest points of the ring or flange and setting them to zero. This is the plane on which the ring or flange would lie if placed on, as the three lowest points are set to zero.

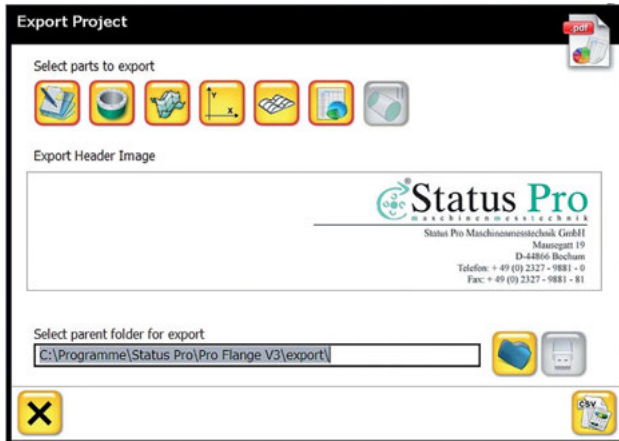


The 3-highest points Mode calculates the plane using the three highest points and setting them to zero. In this case the zero plane would lie above or on top of the flange or ring.

7. Export and Report



By pressing the CSV icon you can access the reporting and exporting view:



The File-path is set to the Export File of the measurement software as a default. This is normally: C:\Apps\StatusPro\ProFlange V3.



Use the folder icon to designate a different file path or destination file for the export task. If a pen drive/USB is connected, you can save directly to the drive or export the whole database to the drive.

When the destination has been chosen, the CSV icon is pressed to carry out the task.

7.1.1 Export content

The current measurement will be saved along with any zeroing or compensation chosen, as well as the chosen zoom factor.

Additionally, the CSV (comma separated values) file for further evaluation in MS Excel will be exported as well as the graphics in bitmap form. A full Report in PDF format completes the export “package”.

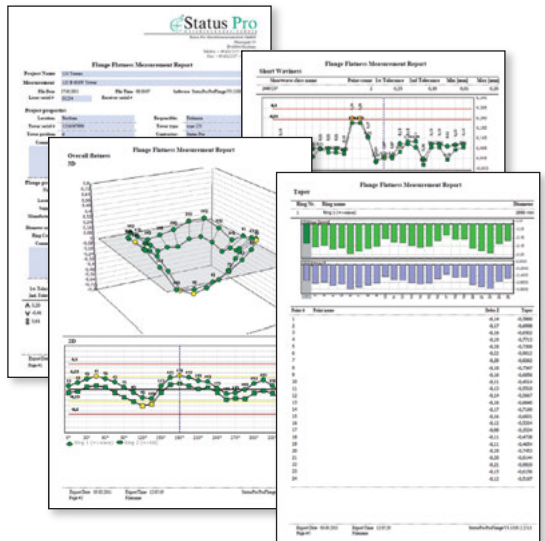
7.1.2 Report Header / Corporate symbol

A corporate symbol can be included into the Report. To do this click on the Status Pro logo then go to the graphic file you wish to be displayed. The chosen symbol will be displayed centrally and should be 745x144 pixels in size. If the symbol is larger than 745x144 pixels, the edges will be “trimmed-down” equally. Smaller symbols will be displayed centrally.

7.2 Report

The exported measurement report contains all relevant information:

- Report header as desired
- Measurement name
- Who carried out the measurement
- Laser/Receiver Serial Number
- Date/Time of measurement
- Comments as required
- Graphics of X and Y
- Statistical information
- Analysis method (i.e. Best-Fit)
- Complete table of measurement data



8. Accessories

T405 Self-aligning Sweep Laser (BG 832550)



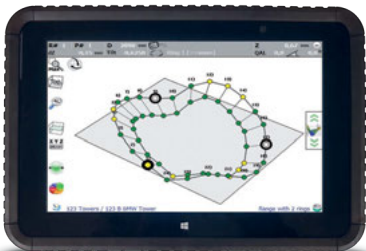
The T405 sweep laser is the first high precision laser to be controlled completely by a PC. It is the laser source of the measurement system, the laser receiver R260 measures the position of the laserbeam. Even the temperature, sensor data, vibrations etc. can be displayed.



R260 Laser Receiver (BG 832600)

The R260 is a robust laser receiver to collect the rotating laser beam. The R260 offers a sensor area of 60 mm to detect the laser plane. The range of up to 50 meters, built-in Bluetooth and removable battery for a measurement duration of up to 8 hours are convincing features. The button for the remote triggering of the measurement makes the receiver a perfect tool for flange measurement.

DU 425 Rugged Touchscreen PC (IT 200425)



Touchscreen Display for indoor and outdoor use. ProFlange Software installed, ready to measure. All sensors and the laser are connected to the Tablet PC via Bluetooth. Just switch everything on, press a button to align the laserplane and start the measurement.

Measurement packages:



SP ProFlange® 100

Content of ProFlange 100 (without UMPC unit):

- 1x T405 laser source with magnet (BG 832500)
- 1x Receiver R260 with 60 mm range, Bluetooth (BG 832600)
- 1x Adapter for measurement stud (R2xx) (BG 831550)
- 1x Magnetic base with low profile magnet (R2xx) (BG 832520)
- 3x Rechargeable battery (BT 800071)
- 1x Charger for two 2 Li-Ion batteries (BG 831680)
- 1x ProFlange V3 Software for Flanges, first licence (SW 200025)
- 1x Launchpad Software for controlling the T430 laser, first license (SW 400010)
- 1x Plastic versatile box (BT 990054)
- 1x Instruction manual R260 laser receiver (BT 991004)
- 1x USB Stick with program and manuals (DBPA SP USB-MICRO)
- 1x Rugged case with foam inlays (BG 990120)



SP ProFlange® 200

Content of ProFlange 200:

- 1x T405 laser source with magnet (BG 832500)
- 1x Receiver R260 with 60 mm range, Bluetooth (BG 832600)
- 1x Adapter for measurement stud (R2xx) (BG 831550)
- 1x Magnetic base with low profile magnet (R2xx) (BG 832520)
- 3x Rechargeable battery (BT 800071)
- 1x Charger for two 2 Li-Ion batteries (BG 831680)
- 1x DU425 Display Unit with touchscreen & bluetooth (IT 200425)
- 1x ProFlange V3 Software for Flanges, first licence (SW 200025)
- 1x Launchpad Software for controlling the T430 laser, first license (SW 400010)
- 1x Plastic versatile box (BT 990054)
- 1x Instruction manual R260 laser receiver (BT 991004)
- 1x USB Stick with program and manuals (DBPA SP USB-MICRO)
- 1x Rugged case with foam inlays (BG 990120)

9. Declaration of conformity

In accordance with the EMC Directive 2004/108/EC, the Low Voltage Directive 73/23/EEC, **including amendments by the CE-marking Directive 93/68/EEC & EC directives RoHS, 2011/65/EU.**

Type of equipment	Alignment System
Brand name or trade mark	Status Pro Maschinenmesstechnik GmbH
Type designation(s) / Model no(s)	T405 – BG 832550 R260 – BG 832600
Manufacturer's name, address, telephone & fax no	Status Pro Maschinenmesstechnik GmbH Mausegatt 19 D-44866 Bochum Germany Tel.: +49 (0) 2327 / 9881 – 0 Fax: +49 (0) 2327 / 9881 – 81

The following standards and/or technical specifications, which comply with good engineering practice in safety matters in force within the EEA, have been applied:

Standard / Test report / Technical construction file / Normative document

Emission:	EN 61000-6-3:2007.
Immunity:	EN 61000-6-2:2005, EN 61000-4-2, -3.
ISO9001:2008	Ref. No / Issued by: DNV Certification No. 2009-SKM-AQ-2704 / 2009-SKM-AE-1419.

The laser is classified in accordance with the International Standard IES-60825-1:2007, USA FDA Standard 21 CFR, Ch I, Part 1040.10 and 1040.11 except for deviations pursuant to laser notice No. 50, dated June 24, 2007.

The wireless device complies with Part 15 of the FCC Rules. Operation is subject to the following two conditions:
 (1) this device may not cause harmful interference, and
 (2) this device must accept any interference received, including interference that may cause undesired operation.

Additional information

The products have been CE-marked in 2004.

As manufacturer, we declare under our sole responsibility that the equipment follows the provisions of the Directives stated above.

Place and date of issue
Bochum, 2014-04-01

Signature of authorized person



David Foley, Managing Director



Status Pro Maschinenmesstechnik GmbH
Mausegatt 19
D-44866 Bochum
Phone: + 49 (0) 2327 - 9881 - 0
Fax: + 49 (0) 2327 - 9881 - 81
www.statuspro.com
info@statuspro.com

Distributor